



Your Prefab Market

[www.europa-prefabri.com](http://www.europa-prefabri.com)

## COMPREHENSIVE BUILDING SOLUTIONS

MEETING PRESENT AND FUTURE SPATIAL  
NEEDS ANYWHERE IN THE WORLD

+34 915 593 625

Modular and industrial construction · Porta-cabins, toilet and shower blocks ·  
Security cabins and guard booths · Warehouses · Storage containers ·  
Homes and much more...



Europa Prefabri was the pioneer to introduce the porta-cabin concept in Spain. From hiring and selling to construction sites, we immediately saw the potential to develop the concept to cover spatial needs for any industry, any sector, from schools to hospitals, events, to extra office space for private or public sectors. Today, we are one of Spain's leaders in the design and manufacture of prefabricated modular solutions, exporting our expertise to all five continents.

In Spain, we offer a comprehensive range of products and services:

For hire in the Spanish Peninsular:


- Porta-cabins
- Modular complexes
- Toilet and shower blocks
- Changing and dressing rooms
- Portable toilets
- Storage containers
- Crowd control barriers for events

Second hand porta-cabins available for sale in Spain

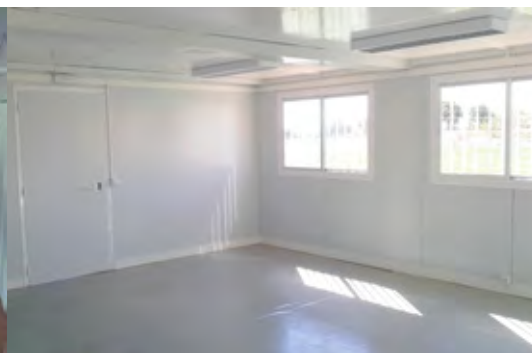


 Custom design

 CE  
marking  


 Products available for export

- Porta-cabins
- Modular construction
- Storage containers
- Security cabins and guard booths
- Prefabricated homes
- Carports & canopies
- Portable Toilets
- Modules for events



## From Spain to the world



### Export

#### Porta-cabins.

Our modular construction system allows Europa Prefabri porta-cabins to be attached, stacked, reassembled meeting any present or future space need. The porta-cabins for export are designed as kits, flat packed and shipped in 40' HC containers to reduce freight costs; up to ten 5.84x2.35 modules can fit into a 40' HC container. The other advantage of our modular kits is that they are easy and quickly assembled. They can be dismantled to be reassembled at another location or simply reconfigured meeting new requirements.

### Assembly service

#### Key Advantages:

- Ease
- Speed
- Flexibility
- Savings
- Design
- Robust
- Customisation
- Multiple options: toilet, shower, interior partitioning and finishes, cladding...
- Multiple configurations: stacked, attached...

### CE marking

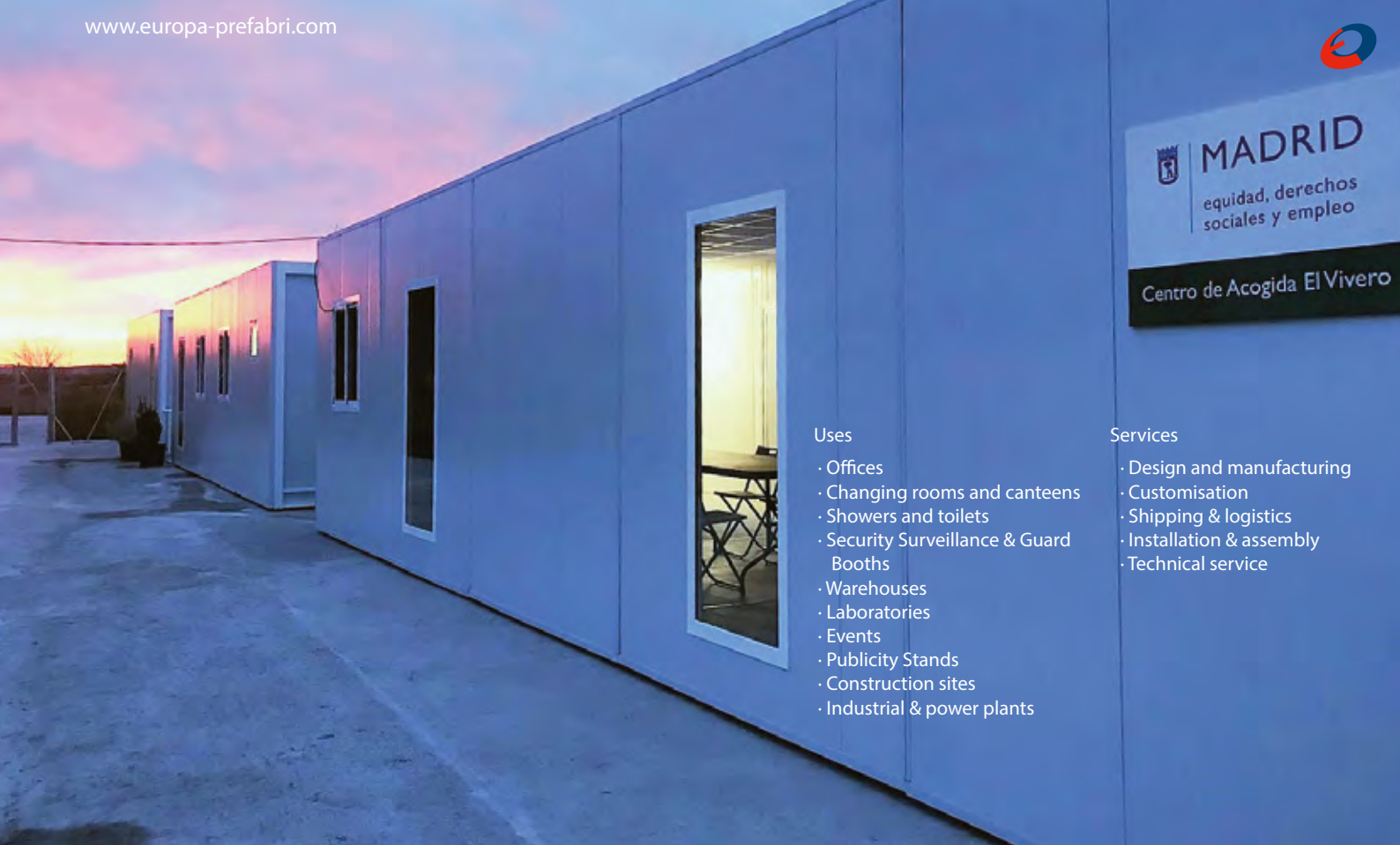
#### Uses:

For any industry or service requiring immediate temporary or permanent space...  
Construction, base camps, petrochemicals, mining, recreation, sport venues, education, healthcare, hospitality, real estate, etc.

- Offices
- Canteens, dining rooms
- Clinics, first aid...
- Classrooms
- Toilet and shower blocks
- Storage
- Accommodation
- & much more...







#### Uses

- Offices
- Changing rooms and canteens
- Showers and toilets
- Security Surveillance & Guard Booths
- Warehouses
- Laboratories
- Events
- Publicity Stands
- Construction sites
- Industrial & power plants

#### Services

- Design and manufacturing
- Customisation
- Shipping & logistics
- Installation & assembly
- Technical service

## Modular Constuction

Prefabricated modules offer a quick and efficient solution to tackle space problems. Their flexibility and design allow creating temporary or permanent modular buildings adapted to any given end use. As with our porta-cabins, the modules are designed for easy handling and shipping.

Modular construction offers great flexibility and versatility. Modules can be stacked in height, attached or rearranged meeting any present or future space need. They can also be installed in the interior of buildings or warehouses for offices, canteens, storage, etc.

Short manufacturing lead times, quick assembly and disassembly if required for another site, reconfiguration to meet new needs, cost and time savings, are just some of the clear advantages over traditional brick and mortar construction.

Assembly service

CE marking 

Flat pack for export







## Customised Modular Construction

The flexibility of modular construction allows us to customise to meet any requirement. Exteriors and interiors can also be customised: wall claddings, interior walls, flooring, windows, doors, ceilings, etc.



### Uses

- Customer service
- Sales offices
- Real estate offices
- Publicity stands
- Events
- Show booths
- Information points
- Kiosks
- Cafeterias
- Businesses
- Exhibits
- Etc





# Security Surveillance Cabins & Guard Booths

Our security cabins and booths are based on two production lines: Flat pack porta-cabin kit for easy shipping and polyester booths for areas subject to harsh saline marine environments such as ports.

## Uses:

- Security and control access points
- Guard booths
- Reception
- Information points
- Ticket offices
- etc.

Flat pack kits, just as our porta-cabins and modular construction, can be adapted and customised meeting customer demands.

- Special glazing and reinforcement upon request
- Accessories: document / cash drawers, A/C, exterior LED lights, security cameras, bollards...



## Polyester Security Cabins:

Made from reinforced polyester with fibreglass, these cabins are ideal for areas subject to harsh saline environments as they are anticorrosive and require minimum maintenance.

Width sizes are 1.50m, 2.40m and 2.80m. Lengths can be of any size as panels of 1 or 2 meters are used in the assembly.





## Prefabricated Homes

Thanks to our experience in the building industry, we are strongly committed to prefabricated homes as an optimal solution.

Feel free to contact us for personalized assessment.

Advantages of our prefabricated homes:

- High efficiency
- Customisation
- Precision
- Quality
- Technology
- Durability
- Eco-friendly & sustainable
- Short lead times
- Compliance with the CTE (Spanish Building Code)
- Savings and cost certainty
- Guarantee 1/3/6/10
- Design innovation







## Carports & Canopies

Leaders in the design and manufacturing of metal structures, we are also specialised in installing canopies for carports and other similar uses.

Our canopies and metal structures carry the CE marking. They are manufactured in accordance with the Spanish CTE building code and are certified by the Official College of Aeronautical Engineers of Spain.

**Carports.** Our steel frame carports are perfect for large carparks such as for shopping malls, airports, train stations, public administration and companies or for home use.

**Customised Canopies.** We also provide custom built large sized metal canopies for multiple uses and venues: Pedestrian walkways, outside storage areas for companies, service stations, football stadium

seating canopies, golf driving range canopies, tollways, sporting venues...

**Textile covers.** These canopies readily adapt to any given space thanks to the flexibility of their modular design. They can be used not only as carports, but any use requiring shade and protection from the weather: Terraces, cafés, service stations, play grounds,

sports fields, rest areas...

**Solar carports.** The carports are designed for solar panels to be fitted on the canopy. We offer customised case studies to obtain the best energy savings solution.







## Toilet & Shower Blocks Eco Friendly Portable Toilets

Our prefabricated solutions also include:

- Adapted toilets
- Portable toilets: Ideal for construction sites, events, beaches....
- Toilet & Shower blocks: Extremely versatile offering a perfect solution for changing rooms, events, shows, camp sites, anywhere these types of facilities are required either temporarily or permanently.





## Prefabricated Warehouses

We are specialists in the manufacture and installation of prefabricated warehouses for multiple uses. The design concept is based on steel structural frames ensuring a solid building that can be quickly erected with substantial cost savings.

In accordance with the location of the warehouse, we conduct the steel structural calculations to guarantee resistance to wind and snow loads as well as compliance with the Spanish CTE building code and other local technical regulations.

Our warehouses can be totally customised selecting size, heights, different types of panels for walls and roofing, thermal and acoustic isolation, special carpentry, translucent roofing sheets, etc.





## Where to find us:



### ◆ Peru

#### Lurin - Lima

C/ Ramón Castilla s/n  
Tel. +511 950 983 871 / +511 480 55 32  
[www.alquimodul-peru.com](http://www.alquimodul-peru.com)

### ◆ Spain

#### Madrid

C/ Perú 6. Edificio Twin Golf B. Planta 2 Oficina 1.  
28290 Las Rozas (Madrid)  
Tel. +34 91 559 36 25 / Fax. +34 91 541 82 99  
[oficina@europa-prefabri.com](mailto:oficina@europa-prefabri.com)

#### Aragón

Apdo. de Correos 381. C/ Río Cinca, 3. Pol. Ind. Villanueva de Gallego. 50830  
Villanueva de Gallego (Zaragoza)  
Tel. +34 97 618 65 96 / Fax. +34 97 618 65 94 / Móvil. +34 680 066 920

#### Castilla La Mancha

Camino Villareal, s/n. Illescas (Toledo)  
Tel. +34 92 555 94 60 / Fax. +34 92 555 95 01

#### Toledo Factory

Ctra. Carranque - El Viso. Pol. Ind. La Ermita,  
Naves 25 y 26. 45215 El Viso de San Juan (Toledo)  
Tel. +34 92 555 94 60 / Fax. +34 92 555 95 01  
[fabrica@europa-prefabri.com](mailto:fabrica@europa-prefabri.com)

#### Andalucía Málaga

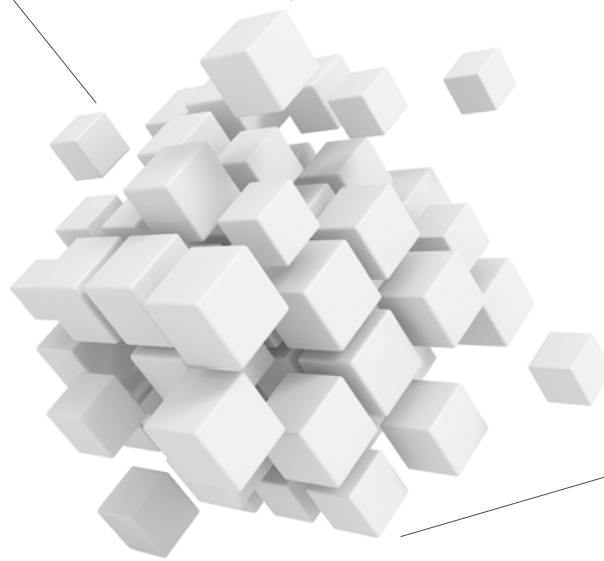
C/ Puente del Rey, nº1. 29130 Alhaurín de la Torre (Málaga)  
Tel. +34 952 23 68 78 / Fax. +34 952 23 66 98  
[andalucia@europa-prefabri.com](mailto:andalucia@europa-prefabri.com)



[www.europa-prefabri.com](http://www.europa-prefabri.com)

BACKED BY  
OVER 30 YEARS  
EXPERIENCE IN  
PREFAB  
CONSTRUCTION

SERVICE  
AND  
RENTALS  
ACROSS  
SPAIN



EXPORTING TO  
OVER 25 COUNTRIES  
ON ALL FIVE  
CONTINENTS

**europa** prefabri

**+34 915 593 625**



Spain

Madrid  
Málaga  
Zaragoza  
Toledo

Perú

Lima

